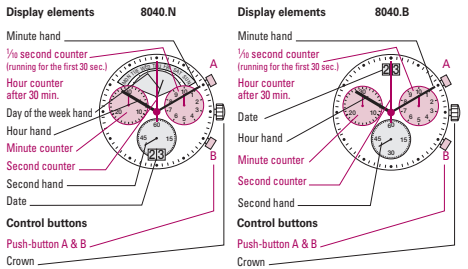


You have decided to buy a watch, which was assembled by a watchmaker using a Ronda movement. Please note that no watches are produced or distributed under the Ronda brand.

**In case of repairs, guarantee claims and questions concerning the functioning of a watch, purchasers and consumers should contact their retailer or the watch manufacturer, for which the relevant information can be found in the sales or guarantee documentation provided with the watch.**

**Description of the display and control buttons**



01

**Chronograph: Basic function**

(Start / Stop / Reset)

Example:

- Start:** Press push-button A.
- Stop:** to stop the timing, press push-button A once more and read the chronograph counters: 4 min / 38 sec / 7/8 sec
- Zero positioning:** Press push-button B. (The chronograph hands will be reset to their zero positions.)

05

**Chronograph: Accumulated timing**

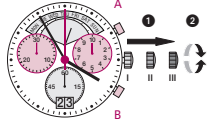
Example:

- Start:** (start timing)
- Stop:** (e.g. 15 min 5 sec following 1)
- Restart:** (timing is resumed)
- Stop:** (e.g. 5 min 12 sec following 3) = 20 min 17 sec (The accumulated measured time is shown)
- Reset:** The chronograph hands are returned to their zero positions.

**Please note:**  
\* Following 4, the accumulation of the timing can be continued by pressing push-button A (Restart / Stop, Restart / Stop, ...).

06

**Setting the time**



- \* Pull out the crown to position III (the watch stops).
- Turn the crown until you reach the correct time 8:45.
- \* Push the crown back into position I.

**Please note:**  
\* In order to set the time to the exact second, 1 must be pulled out when the second hand is in position «60». Once the hour and minute hands have been set, 2 must be pushed back into position I at the exact second.

02

**Chronograph: Intermediate or interval timing**

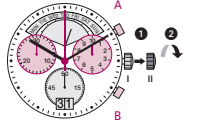
Example:

- Start:** (start timing)
- Display interval:** e.g. 20 minutes 17 seconds (timing continues in the background)
- Making up the measured time:** (the chronograph hands are quickly advanced to the ongoing measured time.)
- Stop:** (Final time is displayed)
- Reset:** The chronograph hands are returned to their zero position.

**Please note:**  
\* Following 2, further intervals or intermediates can be displayed by pressing push-button B (display interval / make up measured time, ...).

07

**Setting the date (quick mode)**



- Pull out the crown to position II (the watch continues to run).
- Turn the crown anticlockwise until the correct date 01 appears.
- Push the crown back into position I.

**Please note:**  
During the date changing phase between approx. 8 PM and 12 PM; the date must be set to the date of the following day.  
An extreme acceleration in setting the date with quick mode can induce a false date indication. The synchronization is re-established by setting the date from 01 till 31 (crown in position II).

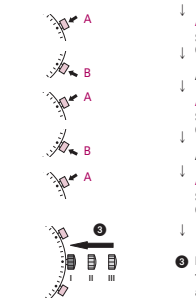
03

**Adjusting the chronograph hands to zero position**

Example:

One or several chronograph hands are not in their correct zero positions and have to be adjusted (e.g. following a battery change).

- Pull out the crown to position III (all chronograph hands are in their correct or incorrect zero position.)
- Keep push-buttons A and B depressed simultaneously for at least 2 seconds (the second counter hand rotates by 360° → corrective mode is activated.)



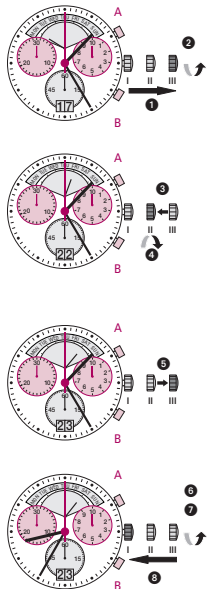
- Adjusting the second counter hand**  
Single step: A 1 x short  
Continuous: A long
- Adjusting the next hand B**
- Adjusting the 1/2 second counter hand (position 3h)**  
Single step: A 1 x short  
Continuous: A long
- Adjusting the next hand B**
- Adjusting the minute counter hand (position 5h)**  
Single step: A 1 x short  
Continuous: A long

- Returning the crown to position I  
Termination of the chronograph hands adjustment (can be carried out at any time).

08

**Setting the date, day of the week (8040.N), time**

Example:  
- Date / time on the watch: 17 / 01:25 / MON  
- Present date / time: 23 / 20:35 / SAT



- Pull out the crown to position III (the watch stops).
- Turn the crown until yesterday's day of the week FRI appears.
- Push the crown to position II.
- Turn the crown anticlockwise until yesterday's date appears 22.
- \* Pull out the crown to position III (the watch stops).
- Turn the crown until the correct date 23 and day of the week SAT appears.
- \*\* Continue to turn the crown until the correct time 8:35 PM appears.
- Push the crown back into position I.

**Please note:**  
\* To set your watch to the exact second, please refer to the chapter entitled «setting the time».  
\*\* Please observe the AM/PM clock rhythm.

04



Battery type: 395 / SR927SW  
Accuracy: +20 / -10 seconds per month

